

TYPICAL CLEAN-OUT

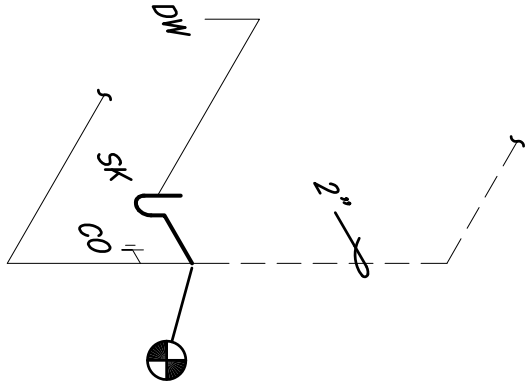
PLUMBING FIXTURE SCHEDULE (AMERICAN STANDARD DR EQUAL)				
NAME	FIXTURE	MODEL #	ACCESSORIES	
SK	KITCHEN SINK	SINGLE BOWL - JUST #899-1921-A-COR 6.5" DEEP	JUST #4-1171-4S FACET, #899-1921-A-COR DRAIN ASSEMBLY, SUPPLY PIPES, ACQUIRE ANGLE STOPS & ADJUSTABLE "P" TRAP INSULATE DRAIN AND SUPPLY PIPES BELOW SINK.	
EXCLURE	WATER PIPE SIZE	NOMINAL SAN. SIZE	MAXIMUM FLOW RATES	
SINK	1/2"	1 1/2"	2.0 GPM	

PLUMBING GENERAL NOTES:

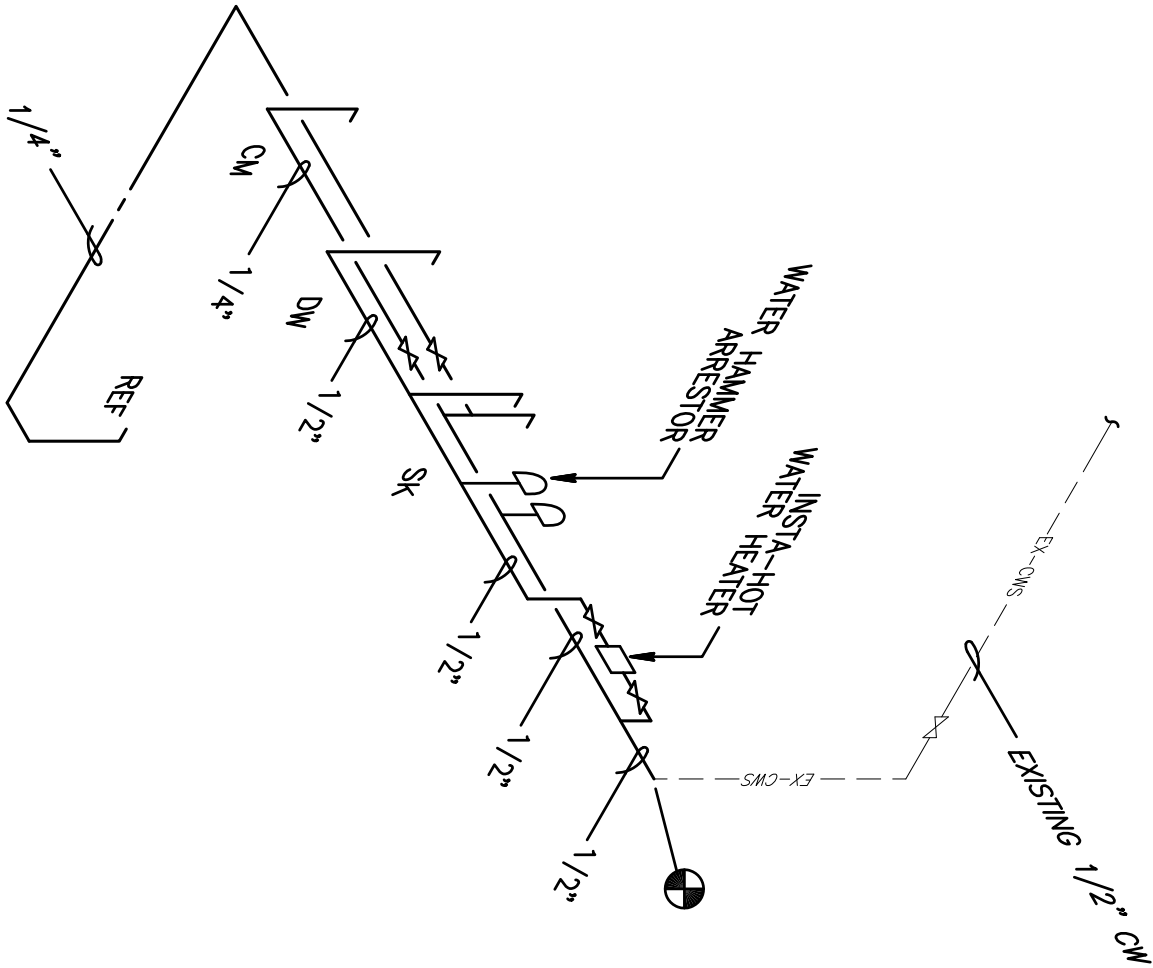
- ALL WORKMANSHIP AND MATERIAL SHALL BE IN STRICT ACCORDANCE WITH APPLICABLE LOCAL CODES, RULES AND ORDINANCES.
- CONTRACTOR SHALL BE RESPONSIBLE FOR THE PROPER LOCATION AND PROTECTION OF ALL EXISTING UTILITIES.
- ALL MATERIAL SHALL BE NEW.
- ALL WORK SHALL BE PERFORMED BY A LICENSED PLUMBING CONTRACTOR IN A FIRST CLASS WORKMANLIKE MANNER. THE COMPLETED SYSTEM SHALL BE FULLY OPERATIVE.
- NO COMBUSTIBLE MATERIAL TO BE USED IN MECHANICAL ROOMS OR IN CEILING SPACES WHERE USED AS RETURN AIR PLENUMS.
- REQUIRED INSURANCE SHALL BE PROVIDED BY THE CONTRACTOR FOR PROTECTION AGAINST PUBLIC LIABILITY AND PROPERTY DAMAGE FOR THE DURATION OF WORK. CONTRACTOR SHALL SECURE AND PAY FOR ALL PERMITS, FEES, INSPECTION & TESTS. DRAWINGS ARE DIAGRAMMATIC. DO NOT SCALE FOR THE EXACT LOCATION OF FIXTURES, PIPING, EQUIPMENT, ETC.
- ALL WORK SHALL BE COORDINATED WITH OTHER TRADES TO AVOID INTERFERENCE WITH THE PROGRESS OF CONJOINT CONSTRUCTION.
- VERIFY LOCATION, SIZE, AND INVERTS OF ALL EXISTING UTILITIES PRIOR TO BEGINNING CONSTRUCTION. ADVISE ENGINEER OF ANY DISCREPANCIES.
- WATER PIPING SHALL BE TYPE "L" COPPER.
- SOIL, WASTE, VENT AND STORM DRAIN PIPING SHALL BE CAST IRON NO HUB 301-172 ABOVE GRADE AND SCH. 40 PVC BELOW GRADE.
- FURNISH AND INSTALL APPROVED SHOCK ARRESTORS AT EACH PLUMBING FIXTURE COULDS AND SINKS.
- INSULATE BEHIND ALL STOPS AND INSULATE HANDICAP LAVATOIRES DRAIN PIPING AND HOT & COLD STOP AND SUPPLIES. COVERS SHALL BE SOFT, REMOVABLE AND UPC APPROVED. MANUFACTURE: PLUMBEREX HANDY-SHIELD, TRU-BRO OR PRO-SERIES.
- ALL FIXTURES MUST BE PROVIDED WITH READY ACCESSIBLE STOPS & APPROPRIATELY MARKED ACCESS PANELS. COORDINATE LOCATIONS WITH GENERAL CONTRACTOR PRIOR TO INSTALLATION.
- PROVIDE CHROME PLATED COMBINATION COVER PLATE & CLEANOUT PLUG OR ACCESS PANEL FOR ALL WALL CLEANOUTS ZURN ZS-1469 SERIES C.O. OR OTHER APPROVED ACCESS PANEL.
- DIELECTRIC COUPLINGS ARE REQUIRED BETWEEN ALL DISSIMILAR METAL IN PIPING AND EQUIPMENT CONNECTIONS.
- ISOLATE COPPER PIPE FROM HANGER OR SUPPORTS WITH ISOLATOR PAD.
- (HAR FELT LINING).
- ALL FIRE RATED FLOOR AND WALL PENETRATIONS SHALL BE PROPERLY PROTECTED WITH APPROVED FIRE/SMOKE/WATER SEALANT.
- CONDUCT SMOKE TESTS AND WATER TESTS AT THE COMPLETION OF THE PLUMBING FROM DEFECTS FOR A PERIOD OF NOT LESS THAN ONE (1) YEAR FROM DATE OF ACCEPTANCE BY OWNER. CORRECTION OF ANY DEFECTS SHALL BE COMPLETED WITHOUT ADDITIONAL CHARGE AND SHALL INCLUDE REPLACEMENT OR REPAIR OF ANY OTHER PHASE OF THE INSTALLATION WHICH MAY HAVE BEEN DAMAGED.
- PROVIDE ACCESS PANELS FOR ALL CONCEALED VALVES AND ALL WATER HAMMER ARRESTERS. ACCESS PANELS IN RATED WALLS MUST MAINTAIN THE SAME RATING.
- PROVIDE ACCESS PANELS FOR THE WALL IN WHICH IT IS INSTALLED. INSULATE ALL CONDENSATE PIPING EXCEPT UNDERGROUND.
- PROVIDE 1/2" TRAP PRIMER LINE FOR ALL FLOOR DRAINS FROM THE NEAREST PLUMBING FIXTURE OR PROVIDE SIOUX CHIEF #699 TRAP PRIMER.
- NO COMBUSTIBLE MATERIAL TO BE USED IN MECHANICAL ROOMS OR IN CEILING SPACES WHERE USED AS RETURN AIR PLENUMS.

SYMBOLS & ABBREVIATIONS

CONDENSATE LINE	CD
HOT WATER PIPE	HW
COLD WATER PIPE	CW
GATE VALVE (SHUT-OFF VALVE)	SDV
SANITARY LINE	SAN
VENT LINE	
EXISTING SANITARY LINE	
EXISTING COLD WATER SUPPLY LINE	
SINK	SK
REFRIGERATOR	REF
COFFEE MACHINE	CM
LAVATORY	LAV
WATER CLOSET	WC
DRINKING FOUNTAIN	DF
WATER HAMMER ARRESTOR	WHA
CONNECTION TO EXISTING SYSTEMS	



SANITARY ISOMETRIC



WATER ISOMETRIC

DRAWING KEYNOTES:

- EXISTING SINK TO BE REPLACED. CONNECT NEW SINK TO EXISTING SANITARY DRAIN WITH NEW ANGLE STOP AND FLEXIBLE PIPE. CONNECT TO NEW HW SYSTEM WITH ANGLE STOP AND FLEXIBLE PIPE.
- PROVIDE 8.0 KW 277 VOLT INSTA-HOT WATER HEATER IN CABINET BELOW SINK. EEMAX MODEL EX801-ML.
- PROVIDE 1/4" CW SUPPLY FOR COFFEE MAKER, WITH SOV IN CABINET BELOW SINK. PROVIDE 10' OF SOFT COPPER TUBING COILED INSIDE CABINET AT THIS LOCATION FOR FUTURE CONNECTION BY TENANT.
- PROVIDE 1/4" CW SUPPLY FOR REFRIGERATOR ICE MAKER, WITH SOV IN CABINET BELOW SINK. PROVIDE 10' OF SOFT COPPER TUBING COILED AT REFRIGERATION LOCATION FOR CONNECTION BY TENANT.
- PROVIDE HW SUPPLY FOR DISHWASHER, WITH SOV IN CABINET BELOW SINK. PROVIDE FLEXIBLE DRAIN CONNECTION TO SINK DRAIN.

 **Gilman & Associates, Inc.**
MECHANICAL & ELECTRICAL ENGINEERS
507 NORTH LAKESIDE DRIVE
Lake Worth, FL 33460 CA.*009078
(561) 582-0210 Fax (561) 582-8212
RONALD D. GILMAN P.E. *37933

PROJ.# 12-008

birse design inc.

5300 woodland lakes drive
palm beach gardens, fl 33418
phone 561-249-4001
fax 772-409-8684
AA26001615

Bd

WAGNER LAW GROUP

FAIRWAY OFFICE CENTER
7108 FAIRWAY DR #125
PALM BEACH GARDENS, FL

PROJECT NUMBER 710829

REVISIONS

1	
2	
3	
4	
5	

DRAWN BY GD

CD

3/23/12

P-1

PLUMBING PARTIAL FLOOR PLAN

SCALE: 1/4" = 1'-0"

CORRIDOR

MAIN LOBBY

RECEPTION

CONFERENCE

OFFICE

OFFICE

105

CORR

102

OFFICE

116

BREAK

117

CL

101

MENS